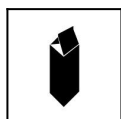




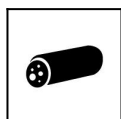
BEST ENERGY CLASS*



Product Categories



Dairy products



Delicatessen



Meat



Pastries



Chicken

Technical Features



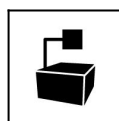
Electric defrost



LED lighting



Off-cycle defrost



Remote condensing unit

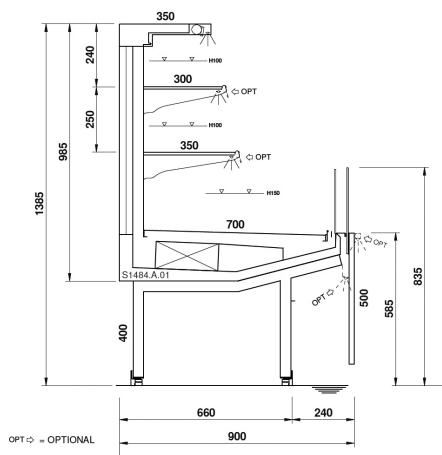


Ventilated

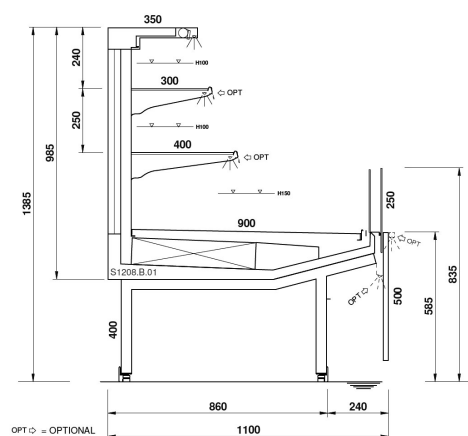


Ventilated High Eff

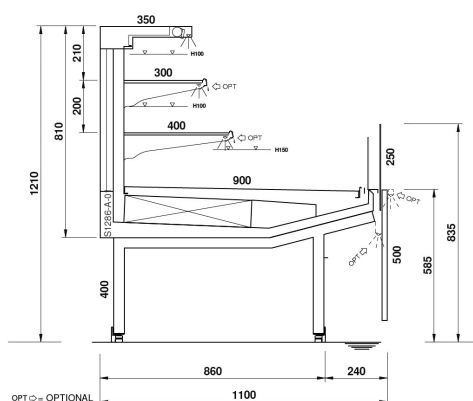
Cross Sections



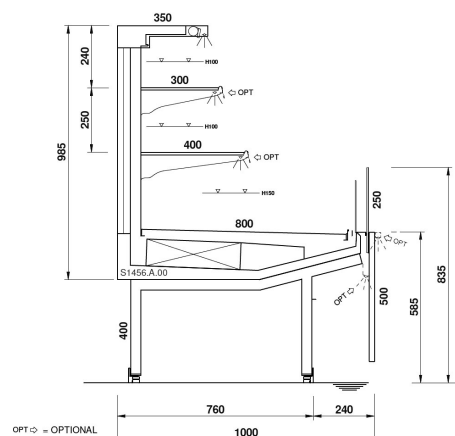
Gemini Krystal 14 S



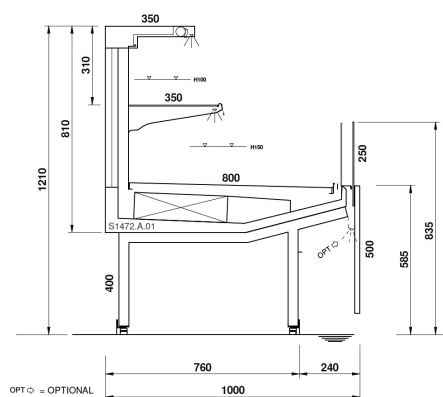
Gemini Krystal 14 L



Gemini Krystal 12 L



Gemini Krystal 14 M



Gemini Krystal 12 M

STILI /

BUTCHERY - GASTRONOMY - PATISSERIE

*The information on the energy class (according to EU regulations 2019/2018 and EU 2019/2024) reported here refers to standard models and precise product configurations and set-ups. The site is based on the information available at the time of publication. As the energy class depends on the specific product configuration, despite the efforts made to ensure the greatest possible accuracy, the real data can differ significantly from the data declared here. For further information, we invite you to consult the European Product Database for Energy Labelling (EPREL) or to contact our Sales Office.